



EDITORIAL POLICY

The *South African Journal of Industrial Engineering* publishes articles emphasising research, development and application within the fields of Industrial Engineering and Engineering and Technology Management. It aims to contribute to the further development of these fields of study and to serve as a vehicle for the effective interchange of knowledge, ideas and experience between the research and training institutions and the application-oriented industry. Articles on practical applications, new research and meaningful new developments as well as state-of-the-art surveys are invited. Articles are subject to blind peer review.

The *South African Journal of Industrial Engineering* is an accredited scientific journal. It is indexed and abstracted in the ISI Science Citation Index (also known as SciSearch®) and the Journal Citations Reports/Science Edition.

INSTRUCTIONS TO AUTHORS

**Covering letter**

When submitting a manuscript, authors should furnish a separate covering letter supplying the name(s) and title(s), e-mail and postal addresses, as well as contact telephone numbers, the position and affiliation of each author; and the author to whom all correspondence should be addressed. The letter should also include a declaration that the research material in the paper submitted to the *South African Journal of Industrial Engineering* has neither been published elsewhere nor is being considered elsewhere for publication. The letter should also agree to the published page rates applicable to articles approved for publication.

**Submission**

It is required that all authors have the draft article reviewed for language proficiency before submitting it to the editor. Some excellent submissions have to be drastically amended or even rejected because of linguistic ineptitude. The editor reserves the right to make minor editorial adjustments without consulting the author. The use of abbreviations should be avoided as far as possible. Manuscripts of no more than 5 000 words may be submitted by e-mail in MS Word format.

Authors are required to conform to the instructions and format prescribed below. An MS Word template for use by authors is available at <http://www.saiie.co.za>. The Trebuchet MS font at 9 point size, single spacing and a page margin of 20 mm along the sides and 20 mm at the top and 20 mm at the bottom, gutter 10 mm, gutter position left, with full justification, should be used on B5 JIS (182 mm X 257 mm) paper size. Header and footer layout is 15 mm. Figures and tables should fit within the prescribed margins and should form an integral part of the article and be numbered consecutively in Arabic numerals. Labelling and lettering of figures and tables should be Trebuchet MS at 9 point size. References in the text should be by author with the reference number in square brackets e.g. Li [1]. The required reference format is illustrated on the next page. The Title Page should conform to the following centred format. The text of the article should only start on the next page. Photographs must be supplied in TIFF or JPEG format at least 300 dpi for good quality reproduction.

**Page rates**

The following page rates apply from the November 2009 edition of the Journal:

SAIIE members in good standing (sole or co-author)	No page charge
Articles with a South African connection	R15 per page in printed copy
Articles with no South African connection	\$10 per page in printed copy

**Submissions and correspondence to:**

Anne-Marie van Heerden [annemarie@eng.up.ac.za](mailto:annemarie@eng.up.ac.za)

TITLE OF THE ARTICLE

K. Maharaj<sup>1</sup> and A.C.J. van Rensburg<sup>2\*</sup>

<sup>1</sup>Wits Business School  
University of Witwatersrand, South Africa

<sup>2</sup>Dept of Industrial and Systems Engineering  
University of Pretoria, South Africa

[antoniej@up.ac.za](mailto:antoniej@up.ac.za)

ABSTRACT

An abstract in English, of no more than 100 words should appear here. It may not include any mathematical symbols.

OPSOMMING

'n Opsomming in Afrikaans van nie meer as 100 woorde moet hier verskyn. Dit mag nie wiskundige simbole bevat nie.

*Please note: This section should start on a new page*

1. INTRODUCTION

A common phenomenon is illustrated in Figure 1.

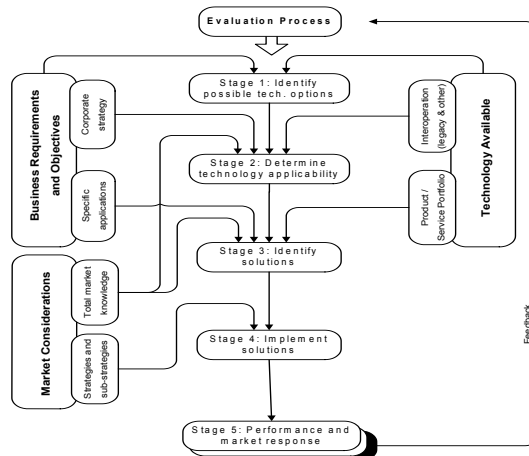


Figure 1: Technology

5. CONCLUSION

6. REFERENCES

for books:

[1] Li, J.C.R. 1964. Statistical Inference, 3rd Edition, McGraw-Hill.

for articles:

[1] Van Dyk, L. 2001. *The philosophy-tool continuum*, South African Journal of Industrial Engineering, 12(1), pp 1-14.<sup>1</sup>

<sup>1</sup>The author was enrolled for the MBA degree at the Wits Business School, University of Witwatersrand

\*Corresponding author